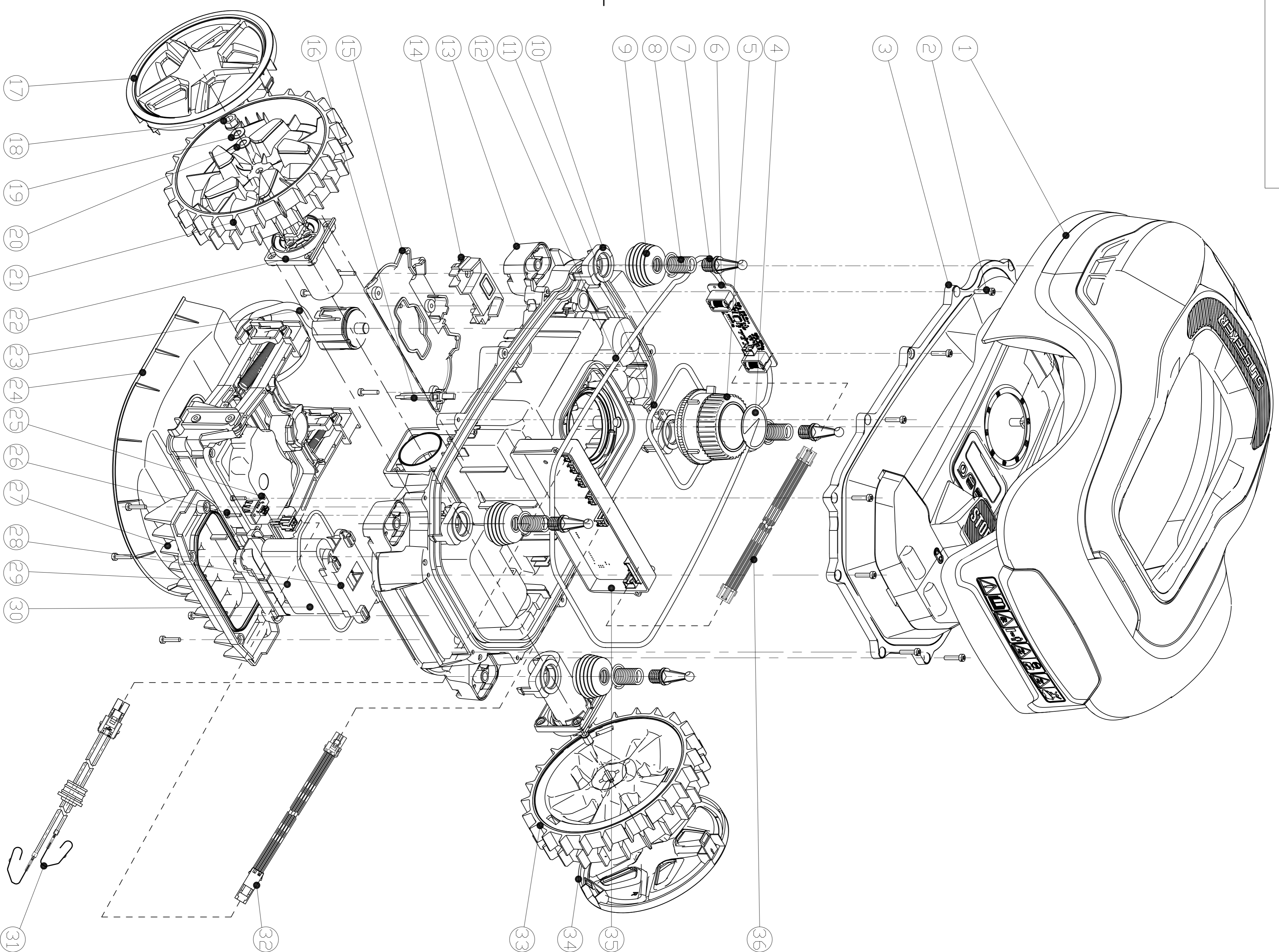


|         |      |         |    |    |
|---------|------|---------|----|----|
| 旧图号     | 标记处数 | ECN变更单号 | 签名 | 日期 |
| JLH(12) | △    |         |    |    |
|         | △    |         |    |    |
|         | △    |         |    |    |



|    |             |                                       |              |    |                    |
|----|-------------|---------------------------------------|--------------|----|--------------------|
| 36 | 80600303-01 | Boundary Sensor wiring Harnesses      | Assembly     | 1  |                    |
| 35 | 80101869-08 | Main Board                            | Assembly     | 1  |                    |
| 34 | 80301572-01 | Right Wheel Cover                     | PP           | 1  |                    |
| 33 | 80301569-01 | Right Rear Wheel                      | PA6+GF15+PPU | 1  |                    |
| 32 | 80600370-01 | Battery to motherboard wiring harness | Assembly     | 1  |                    |
| 31 | 80101233-01 | Charging wire assembly                | Assembly     | 1  |                    |
| 30 | 80400458-01 | Battery Pack Cover Sealing            | Rubber       | 1  |                    |
| 29 | 64800100-01 | Battery (Lithium 20V5.0Ah)            | Assembly     | 1  |                    |
| 28 | 80302240-01 | Battery Holder                        | ABS          | 2  | Flame retardant V0 |
| 27 | 80301548-01 | Battery Cover                         | PP           | 1  |                    |
| 26 | 80700065-13 | Screw                                 | SUS304       | 2  | ST2.9x12           |
| 25 | 80600300-01 | USB Board                             | Assembly     | 1  |                    |
| 24 | 80101240-01 | Cutting System Component              | Assembly     | 1  |                    |
| 23 | 80101236-01 | Front Wheel Kit                       | Assembly     | 1  |                    |
| 22 | 80101237-01 | Motor Assembly                        | Assembly     | 2  |                    |
| 21 | 80301565-01 | Left Rear Wheel                       | PA6+GF15+PPR | 1  |                    |
| 20 | 320500018   | M6-Washer                             | Carbon Steel | 2  |                    |
| 19 | 80700376-01 | M6-Elastic washer                     | Carbon Steel | 2  |                    |
| 18 | 320400008   | M6-Non-metallic Insert Lock Nut       | Carbon Steel | 2  |                    |
| 17 | 80301568-01 | Left Wheel Cover                      | PP           | 1  |                    |
| 16 | 80301551-01 | Height Knob Stop Block                | PA6+GF15     | 1  |                    |
| 15 | 80301545-01 | Board 2                               | PA6+GF30     | 1  | Flame retardant V0 |
| 14 | 80301544-01 | Charging Pole platen                  | PA6+GF30     | 1  | Flame retardant V0 |
| 13 | 80301543-01 | Chassis                               | PP           | 1  |                    |
| 12 | 80400459-01 | Sealing Strip 1 (Ø5 mm)               | Rubber       | 1  |                    |
| 11 | 80400460-01 | Sealing Strip 2 (Ø5 mm)               | Rubber       | 1  |                    |
| 10 | 80301547-01 | Swing Cover                           | PA6+GF15     | 4  |                    |
| 9  | 80400457-01 | Swing Spring Protector                | Rubber       | 4  |                    |
| 8  | 80201448-01 | Swing Spring                          | SUS304       | 4  |                    |
| 7  | 80301546-01 | Swing rod                             | PA6+GF15     | 4  |                    |
| 6  | 80600596-01 | Boundary Sensor Board                 | Assembly     | 1  |                    |
| 5  | 80301602-01 | Height knob                           | ASA          | 1  |                    |
| 4  | 80502374-01 | Height Indicator Sticker              | PET          | 1  |                    |
| 3  | 80101242-01 | Top Cover Assembly                    | Assembly     | 1  |                    |
| 2  | 80700071-06 | Screw                                 | SUS304       | 20 | ST3.9x18           |
| 1  | 80101244-01 | Float Cover Assembly                  | Assembly     | 1  |                    |

B

A

|               |             |                      |          |        |          |
|---------------|-------------|----------------------|----------|--------|----------|
| Serial Number | Map Number  | Name                 | Material | Number | Notes    |
| 1             | 80101244-01 | Float Cover Assembly | Assembly | 1      |          |
| 2             | 80700071-06 | Screw                | SUS304   | 20     | ST3.9x18 |

|      |     |         |   |    |
|------|-----|---------|---|----|
| 客户编码 | 版本号 | 材质      | 质 | 组件 |
| 原厂编码 |     | 颜色/表面处理 |   |    |
| 设计   | 标准化 |         |   |    |
| 校对   |     |         |   |    |
| 审核   |     |         |   |    |
| 工艺   | 批准  |         |   |    |

|      |    |    |    |
|------|----|----|----|
| 阶段标记 | 比例 | 体积 | 重量 |
| 页码   | /  |    |    |

**SUNSEEKER®**

Robotic mower-801M

产品型号 RMA801M20V  
图号 65000011-08

借用件登记

旧底图总号

签字

日期